

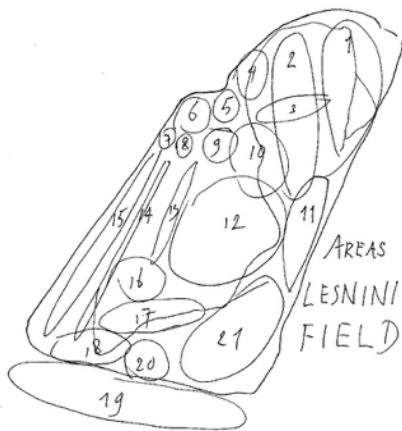


LESNINI FIELD

A 55 ACRE WILDERNESS AND ART RETREAT

FIELD REPORT # ONE—DECEMBER 23RD AND 24TH OF 2019

LESNINI FIELD is 11 feet lower than the surrounding irrigated fields of plantings and furrows along Highway 101. The Wash, the Hollow and the Salinas River are the lowest areas —290 feet above sea level. Yet, all the farm factories are muddy and Lesnini is dry. Lesnini Field was inaugurated with a day-long survey during which 21 distinct areas were defined.

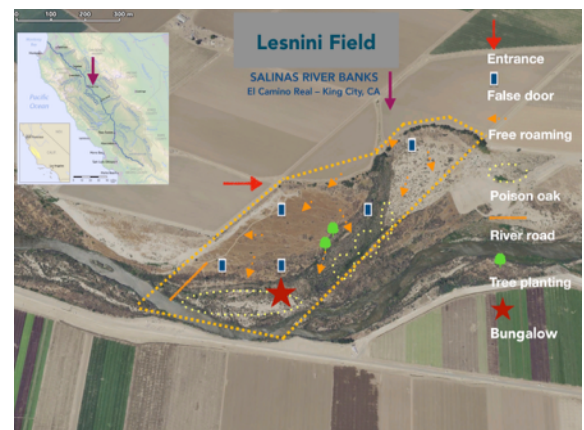


Looking into an inaccessible ravine of vegetation

Work started on the second day with collecting one cubic meter of plastics and disposing of nearly all preconceived ideas about artworks and landscaping. Out in the open in the center of the 22 miles of panopticon it was a joy to have done nothing and a relief to decide to refrain and yield to the extant.

A second survey led to four cul-de-sacs where vegetation is best described as a wall. Visitors may come upon false doors in the Maze, the Ford, the Tongue,

Lesnini Field is happy to welcome the ecologist and landscaper Jennifer Robin Berry. She will join us at the campsite and share her knowledge of California native plants, ecosystems, and wild life.



Between the furrows and the mountains sits Lesnini Field

Lesnini Field Areas:

Gate, Road, Head, Dump, Pits,
Band, Curve, Maze, Fell, Tongue,
Wash, Ford, Table, Hollow, Banks,
River, Shore, Pipes, Flat, Poplars,
and a Terra Incognito